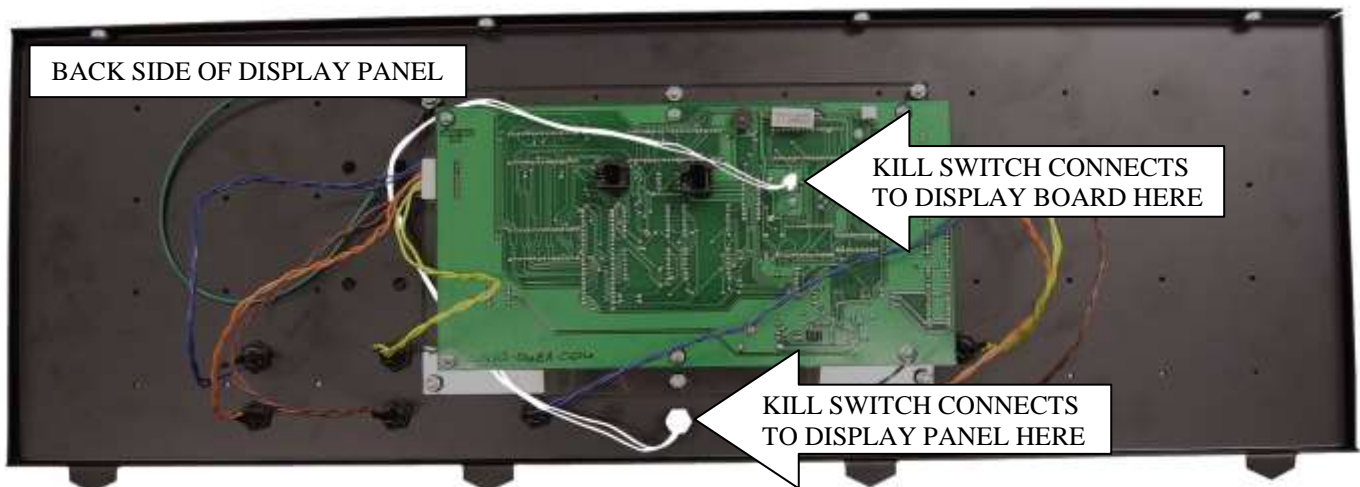


Tuff Tread

502 W. Montgomery STE 120
Willis, TX 77378
PH: (800)827-2017 FAX: (888)898-8974
www.TuffTread.com

MAGNETIC KILL SWITCH ADJUSTMENT & REPLACEMENT INSTRUCTIONS

1. Access the back of the display board. This is done by either a) removing the bolts from the top of the display box or then tilting the display panel forward, or by b) removing the rear panel from the back of the display box. You will only have one of these options available to you for each treadmill.



Older display boards will appear slightly different, but the magnetic kill switch will connect in the same locations. The magnetic kill switch in this picture has been made white for better visibility.

2. Locate and remove the magnet kill switch from the display board by sliding the connector(s) off of the pins that are sticking out of the board. Pull the connector(s) off straight, so that the pins are not bent. There are three types of connectors you might find attaching your kill switch to the display board. They are pictured below.



Tuff Tread

502 W. Montgomery STE 120
Willis, TX 77378
PH: (800)827-2017 FAX: (888)898-8974
www.TuffTread.com

ALWAYS DISCONNECT THE MAGNETIC KILL SWITCH FROM THE DISPLAY BOARD BEFORE YOU BEGIN TO THREAD IT INTO OR OUT OF ITS MOUNTING HOLE ON THE DISPLAY PANEL.



MAGNETIC KILL SWITCH

3. Loosen the nuts on the magnetic kill switch.
4. If you are replacing the kill switch, unthread it from the display panel and set it aside.
5. Using one hand, place your thumb over the kill switch mounting hole on the outside of the display panel.



WHEN YOU FEEL THE KILL SWITCH PRESSING ON YOUR THUMB, STOP THREADING THE KILL SWITCH INTO THE HOLE.

6. Thread the kill switch into the display panel. Stop threading the kill switch when you feel it begin pressing on your thumb.

NOTE: You should not be able to feel or see a bump from the outside. Unthread the kill switch if needed.

7. Tighten the nuts on the magnetic switch. Use your fingers to tighten the nuts, as they may strip if you use a wrench.
8. Attach the connector(s) on the end of your magnetic kill switch to the display board.
9. Test the kill switch by placing the safety magnet on top of the red circle labeled, "MAGNET HERE."
10. Close your display panel. This procedure is now complete.